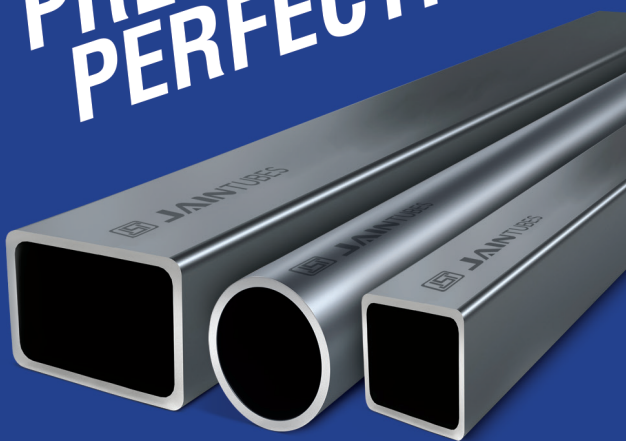


# JAIN TUBES

— JAIHIND GROUP —



**POWER IN  
PRECISION &  
PERFECTION**





## DELIVERING THE HIGHEST STANDARDS OF PRODUCTS & SERVICES.

Established by the prominent Jaihind group of India, Jain marked a new wave in the manufacture & supply of steel tubes & pipes across South India. Jain aspires to be the champion of precision and quality in this Industry and caters to a wide array of clientele from manufacturers to builders & contractors. The state of the art technology and adherence to global quality standards has earned Jain the ISI certification for all its products. Our steel pipes are made from ERW process, also known as PWP, and are of international ASTM standards, built to add long lasting strength to the base of constructions.

## TECHNOLOGY POWERED PRODUCTION UNITS.

We take the quality that Jain delivers in the highest regard and so procure our raw materials from the most reliable & authorized sources. Our production units are decked with advanced technology to manufacture leak & corrosion resistant fully welded tubes and pipes in ample quantity, which are precise to the cut, and securely packed and stored away at our chain of warehouses.



Long Lasting &  
Corrosion Resistant



For Precision  
in cuts



BIS Certified  
For Indian Quality  
Standards



## OUR PRODUCTS:

We manufacture superior quality steel pipes using PWP / ERW processes from steel coils that are welded into various shapes necessary for various building requirements. Our products are carbon-less, corrosion resistant & BIS certified to guarantee the best of precision & strength.

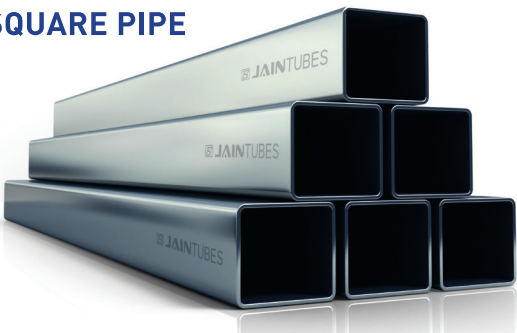
### PRE-GALVANIZED PIPES & TUBES

- ♦ Top grade quality.
- ♦ Perfect for domestic, commercial & industrial truss works, road barriers, parking lots etc.
- ♦ Available in various thicknesses, sizes & shapes.

#### RECTANGULAR PIPE



#### SQUARE PIPE



#### ROUND PIPE



## WEIGHT TOLERANCE : +/- (5%)

### GP PIPE WEIGHT CHART

#### SQUARE

THICKNESS	1	1.2	1.4	1.8	2
SIZE					
SQUARE					
15*15	2.8	3.3	4	5	5.6
20*20	3.4	4.1	4.9	6.8	7.5
25*25	4.5	5.3	6.3	8.5	9.4
30*30	5.6	6.5	7.4	10.2	11.3
38*38	7.1	8.6	10	12.9	14.3
40*40	7.5	9.5	10.4	13.6	15.1
50*50	9.4	10.6	12.7	17	18.9
60*60	11.3	13.5	15.8	20.3	22.6
75*75	14.1	17	18.5	25	27
100*100	-	-	26	33	37

#### RECTANGULAR

25*12	-	4.1	4.8	-	-
40*10	-	5.2	6.3	8.5	9.4
40*20	5.5	6.3	7.4	10.2	11.3
50*25	7.2	8.5	9.5	12.7	14.1
50*10	5.6	6.5	7.4	10.2	11.3
60*10	-	7.9	9.2	-	-
60*40	9.4	10.6	12.8	17	18.9
75*25	9.4	10.5	12.7	17	18.8
80*40	11.3	13	15	20	22.6
95*25	11.3	13	15	20.3	22.6
100*50	14.1	17.5	19	25	26.5

#### ROUND

	1.2	1.4
15	3.5	4.0
20	4.2	5.0
25	5.5	6.5
32	7.0	8.0
40	8.5	9.5
50	10.5	12.5
65	14	16
80	16	18.5



## OTHER PRODUCTS



### GI-HOT DIPPED PIPES & TUBES

- Top quality galvanized steel.
- Zinc coated to resist extreme climatic conditions.
- Available in sizes & shapes matching customer requirements.
- Best suited for over & under-ground piping, power scaffolding & fire fighting.



### STAINLESS STEEL PIPES & TUBES

- Largest provider of rectangular, square & round pipes & tubes.
- Perfect for interior decor, gas pipelines, automobile & other manufacturing units.
- Available in dimensions matching customer requirements.



### MS-HR PIPES & TUBES

- Precision that you can rely on.
- Perfect for construction & fabrication.
- Available in various thicknesses, sizes & shapes.



## CRASH BARRIERS & ANCHORING SYSTEMS

- They offer unparalleled protection and resistance against lateral and uplift forces.
- Crash barriers product line includes W-Beam, Post, and Spacer options.
- Anchoring systems consist of L-Shaped End Beams, Fish Tail, and Bullnose options.



## PRE-ENGINEERED STEEL BUILDINGS {PEB}

- Manufactured in internationally standardised production units.
- Tested and approved by authorised experts.
- Used for residential and industrial construction purposes.

# JAIN TUBES

— JAIHIND GROUP —

JAIHIND STEEL PVT. LTD.,  
29/621 K, JAIN TOWER, 3<sup>rd</sup> FLOOR, VYTTILA,  
COCHIN – 682019, KERALA, INDIA.

**CUSTOMER CARE NO: 7559000300**

✉ [Info@jaihindgroup.in](mailto:Info@jaihindgroup.in) 🌐 [www.jaihindgroup.in](http://www.jaihindgroup.in)