

# JAIN TUBES

JAIHIND GROUP



GI PIPES AND TUBES

**PASSION.  
PRECISION.  
STRENGTH.**

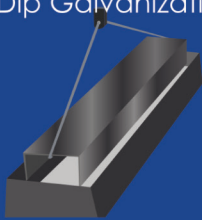


# JAIN TUBES ZX<sup>+</sup> GI -HOT DIPPED PIPES & TUBES

Established in 1978, the Jaihind Group, the business conglomerate spearheaded by Mr. Mahendra Kumar Jain, has a long standing legacy of excellence in Kerala's commodities industry. Over the last 45 years, the group has championed many sectors of the infrastructure market creating new opportunities and global standards in product and service quality. With a wide array of clients including manufacturers, retailers, builders & contractors who rely on Jaihind Group to deliver the perfect and precise solutions & products ranging from Steel, Aluminum, PVC, Agriculture, Software/IT and more. Jaihind has established a strong presence within India and abroad as a leading manufacturer & trading intermediary between producers and purchasers.

## Hot dip Galvanising Process

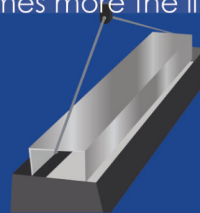
**Step 1:**  
Surface treated black tubes brought for Hot Dip Galvanization



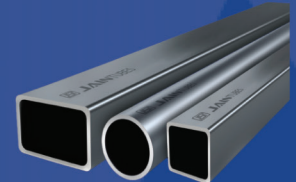
**Step 2:**  
Black Tube immersed in to the bath ensuring 360 GSM pure zinc coating both inside and outside the tube



**Step 3:**  
Pure Zinc coated Jain ZX<sup>+</sup> Tube giving you extra protection and 3 times more the life



**Step 4:**  
Final Product will shift to despatch for distribution



## Advantages of JAIN TUBES ZX<sup>+</sup>

- Steel tubes are first manufactured using high strength raw material and then are coated with pure molten zinc by a process called Galvanization.
- Care is taken to ensure that each tube is completely coated- both inside and outside with minimum 360 GSM (Grams per square meter) of pure zinc coating.
- This ensures that JAIN TUBES GI ZX<sup>+</sup> can withstand harsh effects of nature in coastal regions and regions receiving high rainfall which is compulsive. The beauty and strength of a home can now be maintained.

## Classification of JAIN TUBES ZX<sup>+</sup>



**Class A-Light:**  
These are light gauge pipes which bear a yellow color strip for identification.



**Class B-Medium:**  
These are medium gauge pipes which bear a blue color strip for identification.



**Class C-Heavy:**  
These are heavy gauge pipes which bear a red color strip for identification.

Nominal Bore		Outside Diameter	Light (A-Class) Thickness Weight		Medium (B-Class) Thickness Weight		Heavy (C-Class) Thickness Weight	
Inch	mm	mm	mm	kg/mtr	mm	kg/mtr	mm	kg/mtr
1/2"	15 nb	21.43	2	0.952	2.65	1.122	3.25	1.45
3/4"	20 nb	27.2	2.35	1.41	2.65	1.58	3.25	1.9
1"	25 nb	33.8	2.65	2.01	3.25	2.44	4.05	2.97
1.1/4"	32 nb	42.9	2.65	2.58	3.25	3.14	4.05	3.84
1.1/2"	40 nb	48.4	2.9	3.25	3.25	3.61	4.05	4.43
2"	50 nb	60.3	2.9	4.11	3.65	5.1	4.47	6.17
2.1/2"	65 nb	76.2	3.25	5.84	3.65	6.61	4.47	7.9
3"	80 nb	88.9	3.25	6.81	4.05	8.47	4.85	10.1
4"	100 nb	114.3	3.65	9.89	4.5	12.1	5.4	14.4
5"	125 nb	139.7	-	-	4.85	16.2	5.4	17.8
6"	150 nb	165.1	-	-	4.85	19.2	5.4	21.2

## Product Specification & Tolerance

TOLERANCE AS PER IS 1239-2004				
(A) THICKNESS	TOLERANCE	(B) WEIGHT	TOLERANCE	(C) LENGTH
1) Light Tubes	+Not Limited -8%	1. Single Tube (Light series)	+ 10 % - 8%	Light, Medium & Heavy tubes Random Length of 4 to 7 meters unless specified otherwise
2) Medium & Heavy Tubes	+ Not Limited -10%	2. Single Tubes (Medium & Heavy series)	± 10 %	
		3. For quantities per load of 10 Tons min. (Light series)	+7% - 5%	
		4. For quantities per load of 10 Tons min. (medium & heavy series)	± 7.5%	



## Manufacturing as per Indian & International Standards

JAIN TUBES GI - ZX\* are Manufacturing as per Indian & International Standard specification.

- IS 4923 for square and rectangular steel tube
- IS 1239, IS 1161 & IS 3601 for circular steel tube



**Test Certificate** - For every lot of JAIN TUBES GI - ZX\* test certificate is provided.

**Quality Control** - Each & every tube manufactured at JAIN TUBES's state-of-the-art facility conforms to the highest quality standards. This is a result of superior manufacturing processes and stringent quality control at every step, which is part of JAIN TUBES's ISO 9000 quality management system. Tests such as non destructive eddy current testing directly after ERW welding, off-line drift and attening tests are part of the quality process and ensure standards that match the best. Hence, each & every tube which reaches market are free from defects.

## Applications of JAIN TUBES ZX+



### Constructions

Jain zx\* are lightweight and easy to transport and install. And which is strong, durable and resistant to dust and abrasion. Because of corrosion resistant and cost effective than a concrete building we can use Jain tubes for PEB purposes. This can be used as Hand railings, Gates, Windows, Roof sheds, Furniture. All these applications are in construction field.



### Green House

A greenhouse is a structure that allows people to regulate climatic conditions, such as temperature and humidity. There are many different designs of greenhouses; however in general three buildings include large areas of transparent material to capture the light and heat of the sun. For the construction of Greenhouses we can use the Jain Tubes ZX.



### Waterline

Conveying raw water and distribution of treated water in many rural water supply schemes, where the requirement of water is limited. For the purpose of irrigation, drinking water lines, sewage etc.



### Industrial

In construction projects, the choice of materials holds immense influence over the durability, longevity, and overall quality of the end product. It holds the features low cost, versatility toughness & strength of the product. Sheds, fencing, automobile applications, solar system, boilers are the common applications of GI Pipes in the industrial area.



### Others

For the applications of tower, Streetlights, cable poles and for EB Pipe lines GI Pipes are the main product. Because of the same feature the GI Pipes are used for the purposes of tower and etc.

**JAIN TUBES**  
— JAIHIND GROUP —

29/621 K, Jain Tower, 3<sup>rd</sup> Floor. Vyttila, Cochin - 682019, Kerala, India

✉ Info@jaihindgroup.in ☎ +91 755 9000 300